












QUADRO DI UNIONE ISOLATI

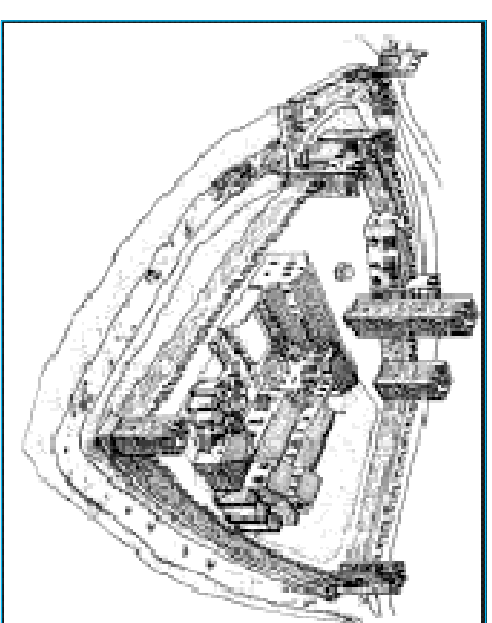
LEGENDA

Categorie operative edilizie

-  RESTAURO CONSERVATIVO
-  CONSERVAZIONE TIPOLOGICA
-  RISANAMENTO CONSERVATIVO
-  RISTRUTTURAZIONE EDILIZIA
-  AMPLIAMENTO E SOPRAELEVAZIONE
-  NUOVA COSTRUZIONE
-  DEMOLIZIONE SENZA RICOSTRUZIONE
-  DEMOLIZIONE CON RICOSTRUZIONE
-  ALLINEAMENTO OBBLIGATORIO DI GRONDA



**Provincia di Pordenone
COMUNE DI SESTO AL REGHENA**



Professione Ingegnere

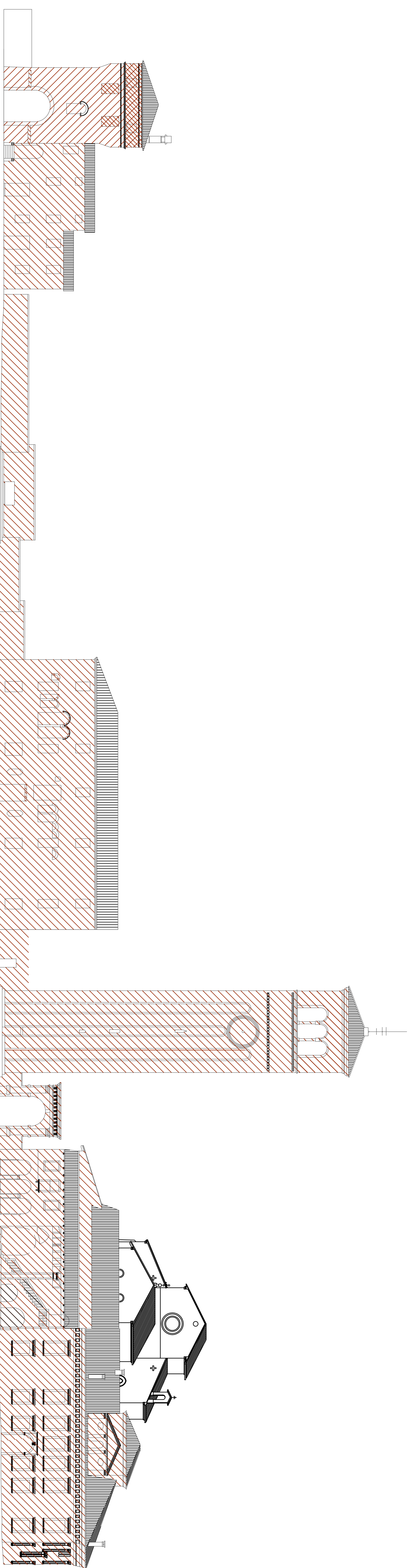
arch. Giovanni Berth
Via F.lli Scardina, 40
33170 Focchione
Tel. +39 0434/542677
Info@berth.1918

Piano Regolatore Particolareggiato
del Centro Storico

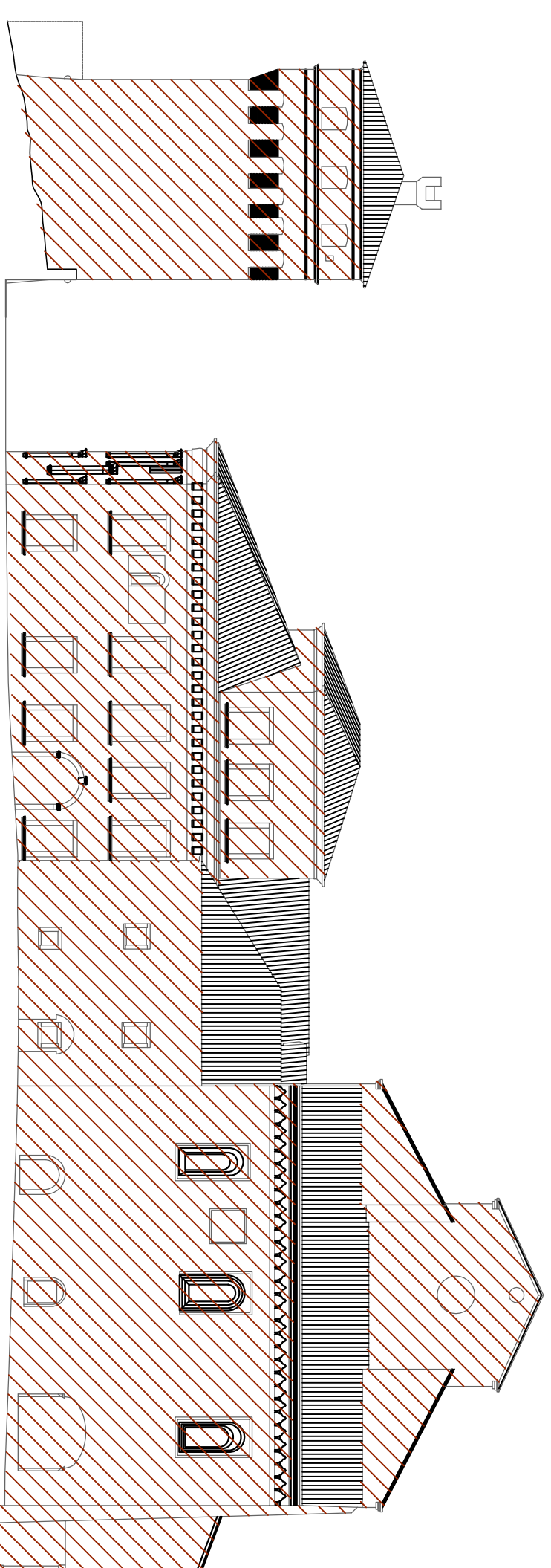
Comune di Sesto al Reghena

PROSPETTO PIAZZA CASTELLO

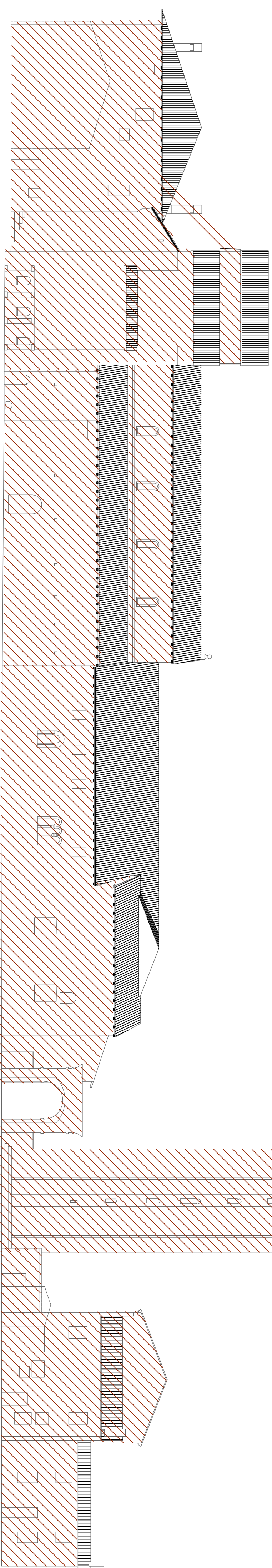
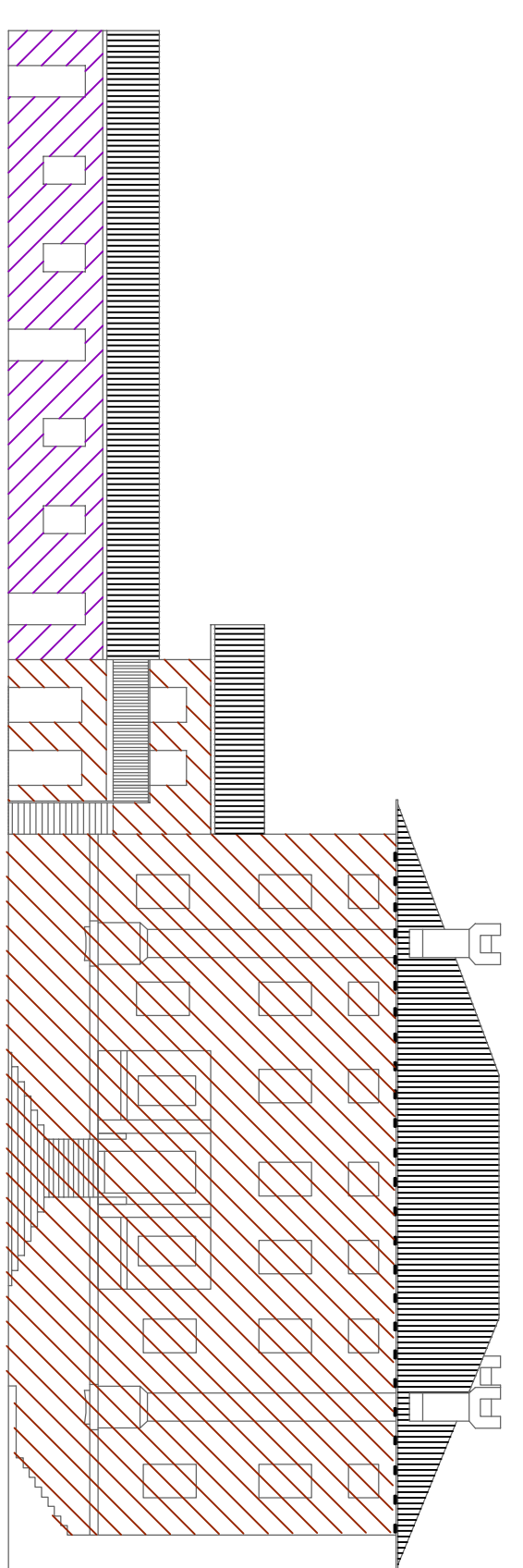
DATA	SCALE
07/2005	1:200
PROGETTO	COMPILAZIONE
P5,a	A001
REV.	REV.
	A001



PIAZZA CASTELLO VISTA 1



PIAZZA CASTELLO VISTA 3



PIAZZA CASTELLO VISTA 2

PIAZZA CASTELLO VISTA 4